

Premium Marine Vinyl

Allsport • Biscayne • Cantech • Catalina • Edge • Freepart • Monterey • Newport
Prodigy • Protégé • Samibel • Seabrook • Shock • Wave • Yorktown



Morbern

www.morbern.com

Seabrook
Chalk SB-120

Allsport
Chalk AS-102

Shock
Supersonic SH-100

Prodigy
White PRO-680

Wave
White Cap WV-209

Seabrook
D White* SBD-136

Cantech
White CA-129

Freepart
White FR-410

Protégé
White PG-02

Seabrook
D Sea White* SBD-135

Catalina
Killer White CL-500

Edge
Chalk EG-301

* Dull Finish



Seabrook
Sea White SB-112

Seabrook
Stinger Cream SB-121

Monterey
Pearl White MY-800



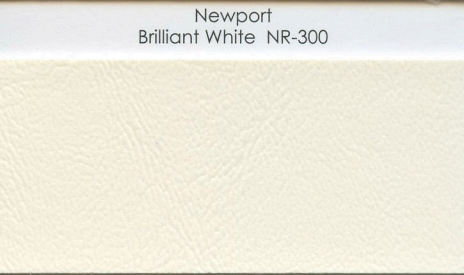
Newport
Brilliant White NR-300



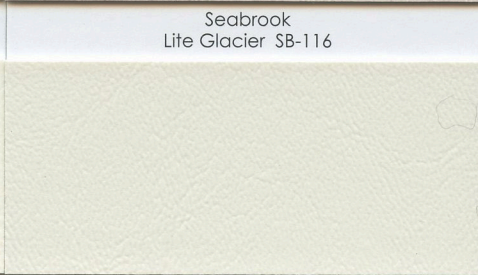
Seabrook
Lite Glacier SB-116



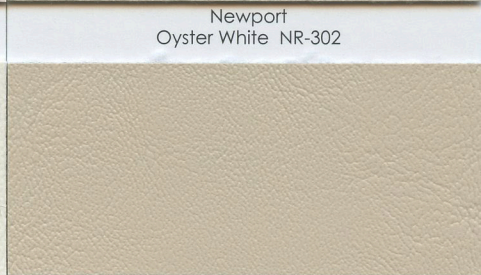
Newport
Oyster White NR-302



Seabrook
D Gel White* SBD-137



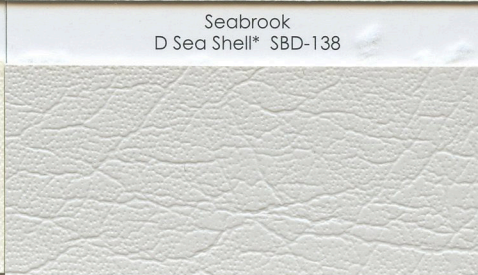
Seabrook
D Sea Shell* SBD-138



Catalina
Sand CL-503



Biscayne
White BI-102



Freeport
Chalk FR-406



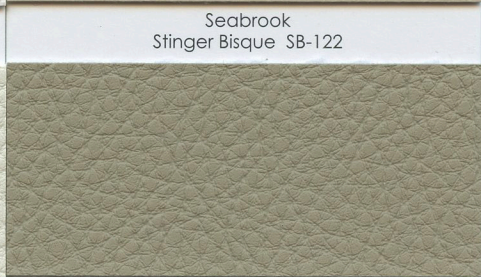
Seabrook
Stinger Bisque SB-122



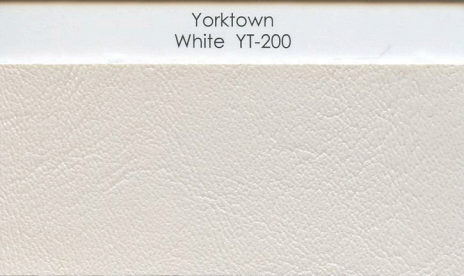
Yorktown
White YT-200



Prodigy
Bisque PRO-681



Prodigy
Lt Neutral PRO-682



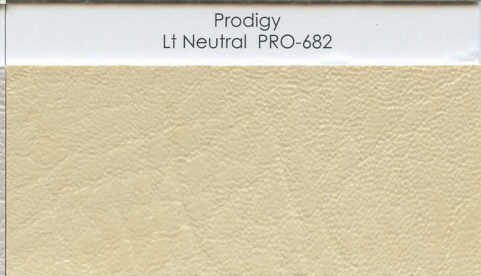
Newport
Chalk NR-301

* Dull Finish

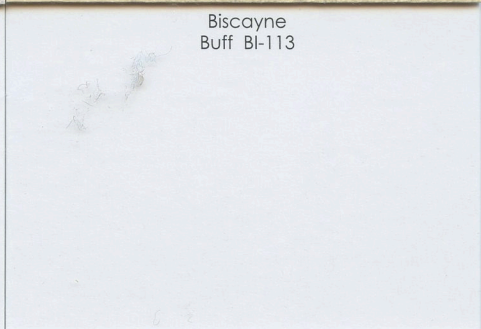
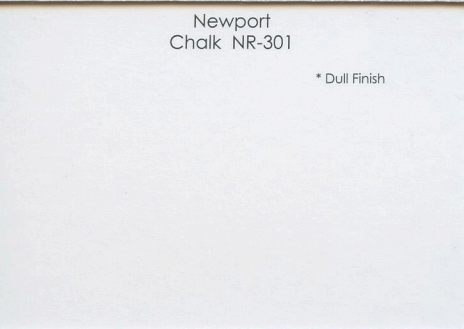


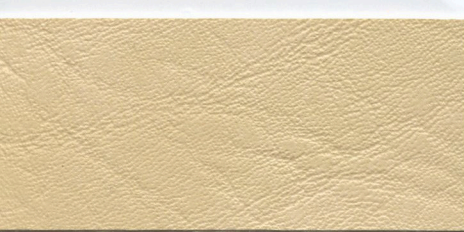
Freeport
Surf FR-411

* Dull Finish



Biscayne
Buff BI-113





Biscayne
Bone BI-114



Prodigy
Lt Sand PRO-684



Edge
Titanium EG-311



Freeport
Champagne FR-401



Yorktown
Squash YT-202



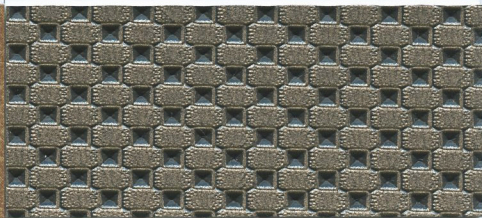
Prodigy
Grey PRO-699



Protégé
Cream PG-01



Yorktown
Tan YT-203



Wave
Liquid Silver WV-206



Prodigy
Cream PRO-683



Biscayne
Buck BI-119



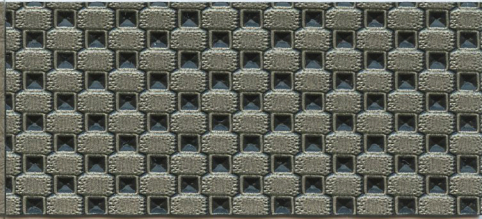
Biscayne
Cool Grey BI-104



Biscayne
Sand Tan BI-116



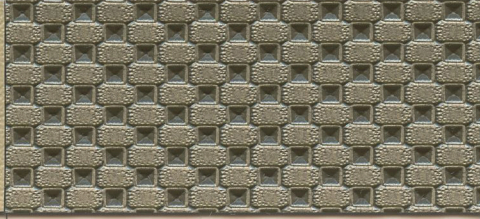
Prodigy
Lt Sandlewood PRO-685



Wave
Nickel WV-208



Biscayne
Beige BI-115



Wave
Bronze Mist WV-207



Freeport
Moonbeam FR-400



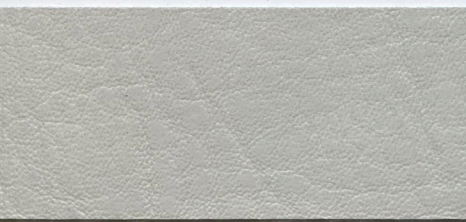
Seabrook
Moonlite SB-111



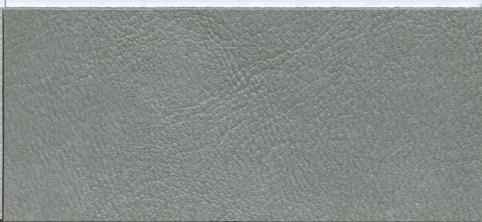
Allsport
Silver Metallic AS-105



Shock
Storm SH-105



Biscayne
Quicksilver BI-103



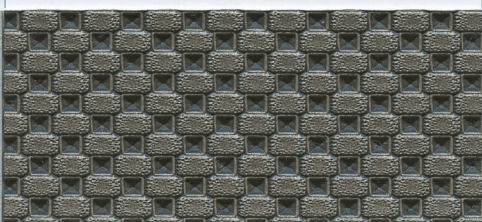
Yorktown
Slate Grey YT-216



Seabrook
Porcelain SB-109



Catalina
Dolphin CL-510



Wave
Pewter Mist WV-210



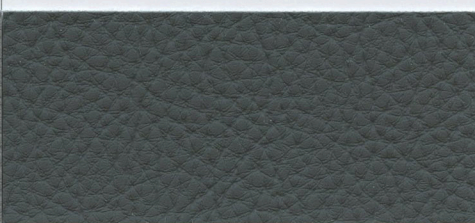
Catalina
Grey Seal CL-512



Shock
Thunder SH-104



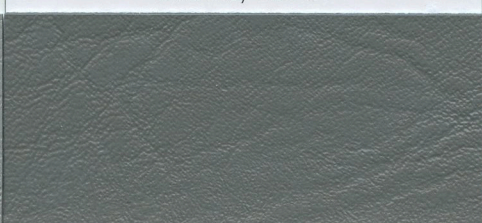
Prodigy
Med Grey PRO-677



Prodigy
Charcoal PRO-678



Freeport
Marble FR-405



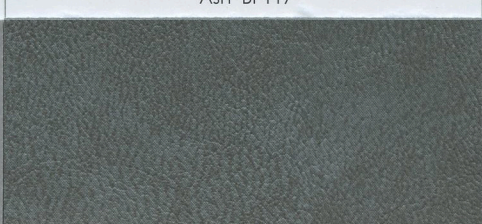
Biscayne
Ash BI-117



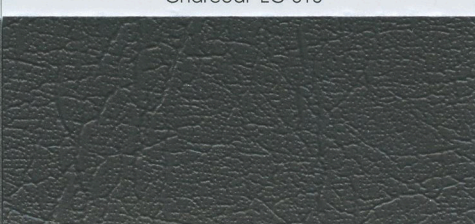
Edge
Charcoal EG-313



Seabrook
Marble SB-110



Yorktown
Ash YT-217



Freeport
Charcoal FR-402



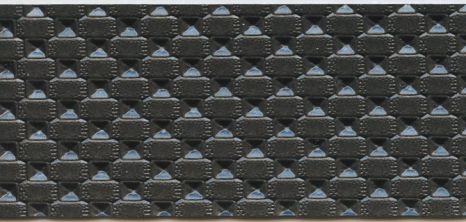
Shock
Carbon SH-106



Shock
Jet SH-107



Catalina
Orca Black CL-513



Wave
Rocket WV-211



Allsport
Black AS-100



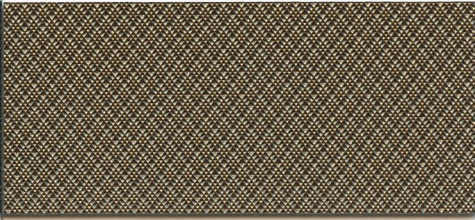
Allsport
Hi Tac Black AS-101



Biscayne
Charcoal BI-118



Biscayne
Black BI-101



Edge
Bronze EG-312



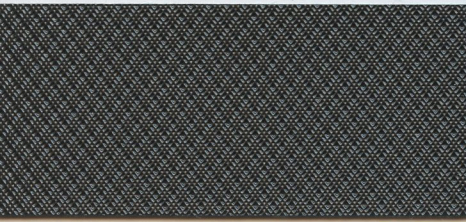
Prodigy
Espresso PRO-695



Seabrook
Ebony SB-102



Prodigy
Empire Tan PRO-687



Edge
Black EG-314



Newport
Ebony NR-317



Protégé
Empire Tan PG-03



Prodigy
Black PRO-679



Freeport
Black FR-404



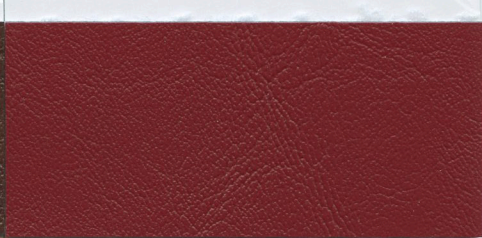
Prodigy
Paprika PRO-688



Yorktown
Bittersweet YT-205



Biscayne
Sable BI-120



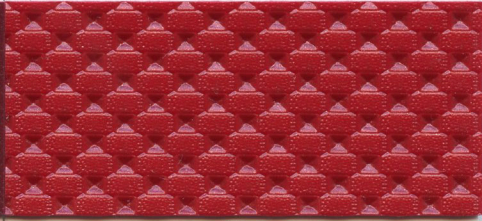
Newport
Crimson NR-313



Prodigy
Equestrian PRO-689



Seabrook
Ruby SB-101



Wave
Acid Sun WV-204



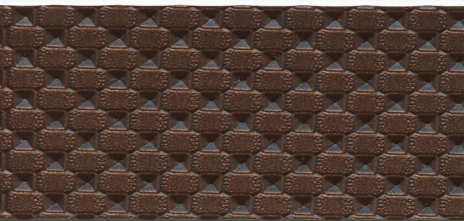
Yorktown
Beechnut YT-204



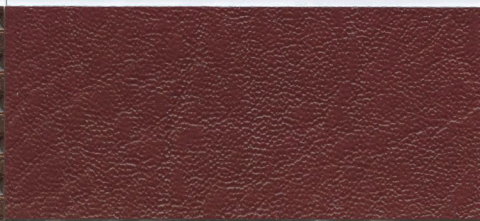
Newport
Burgundy NR-314



Allsport
Aztec Red AS-110



Wave
Topaz Mist WV-203



Biscayne
Port BI-100



Biscayne
Fire Red BI-125



Prodigy
Java PRO-692



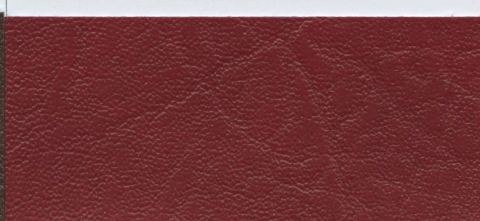
Yorktown
Oxblood YT-215



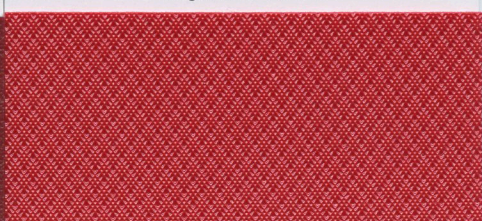
Allsport
Bright Red AS-104



Yorktown
Chestnut YT-206



Biscayne
Chianti BI-127



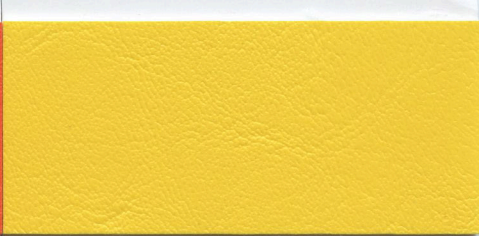
Edge
Red EG-309



Freeport
Special Red FR-424



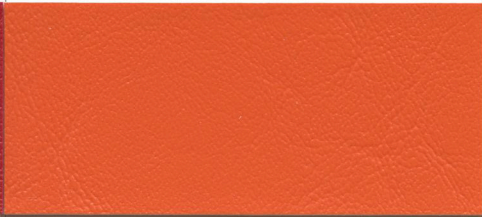
Biscayne
Tiger Lily BI-124



Newport
Yellow NR-304



Biscayne
Rouge BI-126



Seabrook
Hot Orange SB-145



Catalina
Sun Gold CL-504



Catalina
Coral Reef CL-511



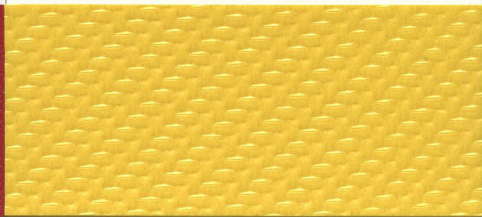
Seabrook
D Action Yellow* SBD-146



Freeport
Iced Mauve FR-415



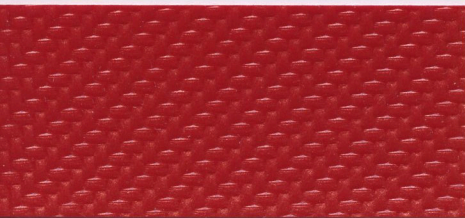
Seabrook
American Beauty SB-103



Shock
Lightning SH-101



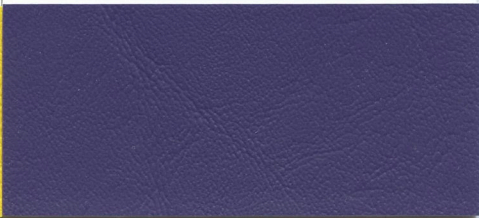
Allsport
Bright Violet AS-109



Shock
Hot Rod SH-102



Allsport
Nu Bright Yellow AS-103



Seabrook
D Purple* SBD-141



Wave
Tangerine WV-201



Wave
Solar Flare WV-202



Catalina
Twilight Purple CL-509

* Dull Finish

* Dull Finish



Newport
Baby Blue NR-306



Wave
Freestyle WV-205



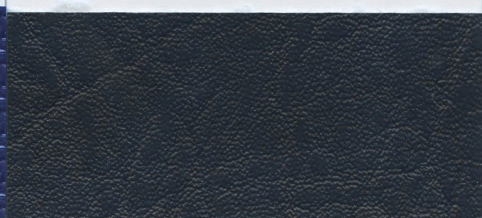
Yorktown
Indigo YT-212



Seabrook
Blue SB-139



Shock
Horsepower SH-103



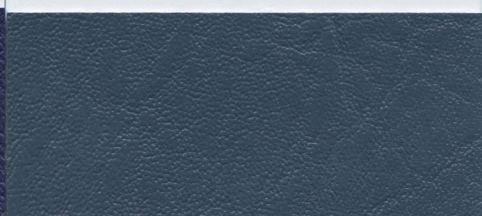
Biscayne
Navy BI-108



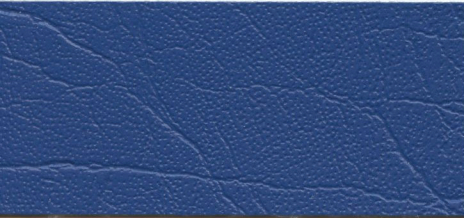
Catalina
Channel Blue CL-506



Allsport
Electric Blue AS-107



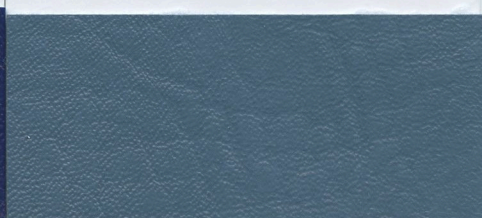
Biscayne
Nordic BI-107



Freeport
Bahama Flagship FR-418



Seabrook
Midnight SB-108



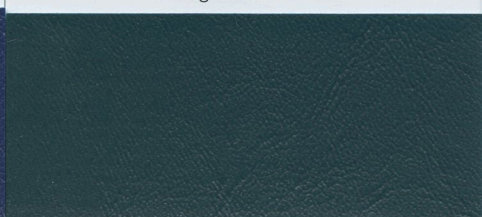
Biscayne
Wedgewood BI-106



Allsport
Royal Blue AS-106



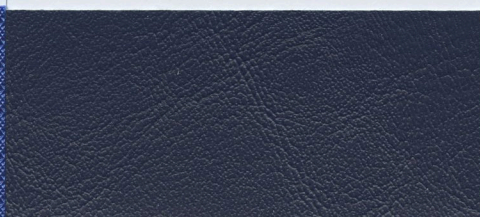
Catalina
Marlin Blue CL-507



Seabrook
D Nu Teal* SBD-106



Edge
Navy EG-308



Newport
Midnight NR-311

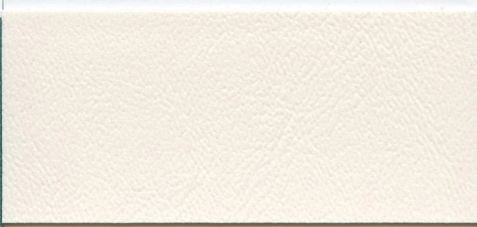


Biscayne
Teal BI-123

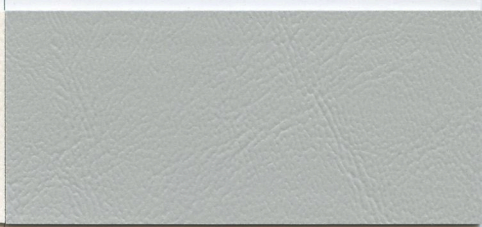
* Dull Finish



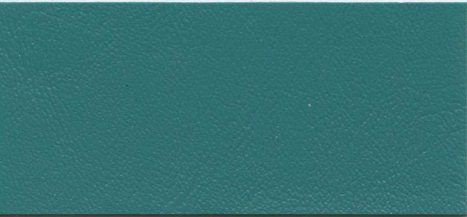
Allsport
Marine Green AS-108



Sanibel
Seafoam White SAN-112



Sanibel
Moon SAN-111



Seabrook
Deep Sea SB-118



Sanibel
White SAN-136



Sanibel
Sharkskin SAN-110



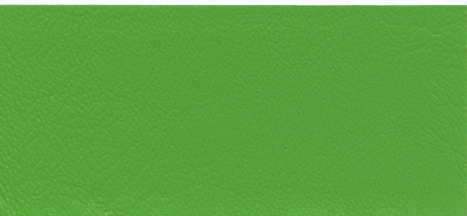
Yorktown
Pale Green YT-208



Sanibel
Off White SAN-138



Sanibel
Sunrise SAN-146



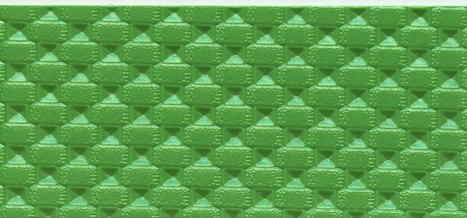
Seabrook
Lime SB-147



Sanibel
Cream SAN-121



Sanibel
Sunset SAN-103



Wave
Vibrant Wake WV-200



Sanibel
Bisque SAN-122



Sanibel
Atlantic SAN-108



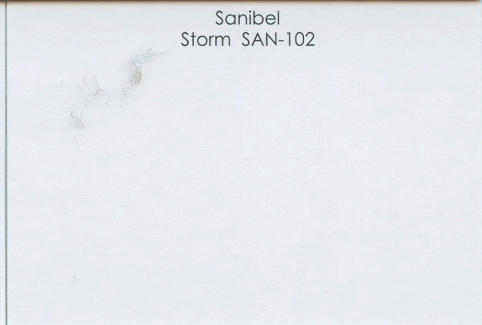
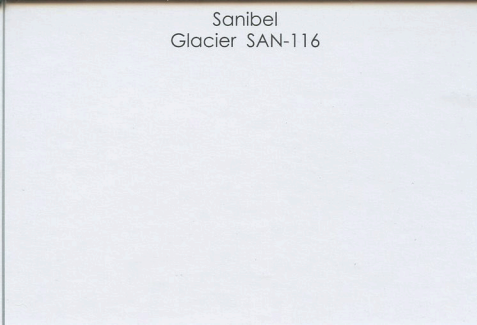
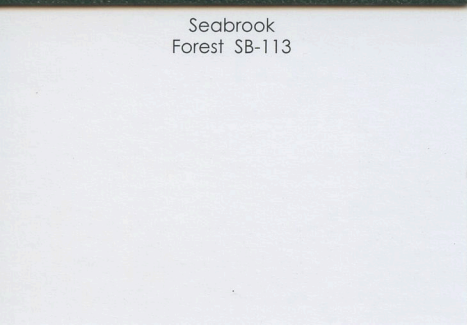
Seabrook
Forest SB-113



Sanibel
Glacier SAN-116



Sanibel
Storm SAN-102



Morbern Marine Collection

- Allsport
- Cantech
- Edge
- Monterey
- Prodigy
- Sanibel
- Shock
- Yorktown
- Biscayne
- Catalina
- Freeport
- Newport
- Protégé
- Seabrook
- Wave

Allsport

- Roll Width: 54"
- Roll Size: 40 yards
- Quality: Snowsport II MR/FR
- Cold Crack: -60°F
- Weight/Linear Yd: 36 ± 2.25
- Abrasion Resistance using the Wyzenbeek Method: 30,000 Double Rubs

Biscayne, Catalina, Freeport, Newport, Yorktown:

- Roll Width: 54"
- Roll Size: 40 yards
- Quality: Mellohide MR/FR
- Cold Crack: -25°F
- Weight/Linear Yd: 32 ± 2.5
- Abrasion Resistance using the Wyzenbeek Method: 30,000 Double Rubs

Cantech:

- Roll Width: 54"
- Roll Size: 40 yards
- Quality: Merritt MR
- Cold Crack: -25°F
- Weight/Linear Yd: 30.75 ± 1.5
- Abrasion Resistance using the Wyzenbeek Method: 30,000 Double Rubs

Edge, Shock, Wave:

- Roll Width: 54"
- Roll Size: 40 yards
- Quality: Merritt MR/FR
- Cold Crack: -25°F
- Weight/Linear Yd: 30.75 ± 1.5
- Abrasion Resistance using the Wyzenbeek Method: 30,000 Double Rubs

Monterey:

- Roll Width: 54"
- Roll Size: 40 yards
- Quality: Mellohide MR U 10
- Cold Crack: -25°F
- Weight/Linear Yd: 29 ± 1.5
- Abrasion Resistance using the Wyzenbeek Method: 30,000 Double Rubs

Prodigy:

- Roll Width: 54"
- Roll Size: 40 yards
- Quality: Mellotech MR/FR +
- Cold Crack: -25°F
- Weight/Linear Yd: 30.75 ± 1.5
- Abrasion Resistance using the Wyzenbeek Method: 100,000 Double Rubs

Protégé:

- Roll Width: 54"
- Roll Size: 40 yards
- Quality: Merritt MR 55
- Cold Crack: -25°F
- Weight/Linear Yd: 30.75 ± 1.5
- Abrasion Resistance using the Wyzenbeek Method: 30,000 Double Rubs

Sanibel:

- Roll Width: 54"
- Roll Size: 30 yards
- Quality: Caliber MR FR
- Cold Crack: -25°F
- Weight/Linear Yd: 31.5 ± 1.5
- Abrasion Resistance using the Wyzenbeek Method: 30,000 Double Rubs

Seabrook/Seabrook D:

- Roll Width: 54"
- Roll Size: 40 yards
- Quality: Seaway MR
- Cold Crack: -25°F
- Weight/Linear Yd: 31.5 ± 1.5
- Abrasion Resistance using the Wyzenbeek Method: 30,000 Double Rubs

Features & Benefits of All Patterns:

- Ultraviolet Stable Pigment
- Mildew Resistant
- 1000 Hour Weatherometer
- UFAC Class 1*
- CA TB 117-2013 (Section 1-Cover Fabric)*
- BIFMA Class A*

Features & Benefits of Allsport, Biscayne, Catalina, Edge, Freeport, Newport, Prodigy, Sanibel, Seabrook/Seabrook D, Shock, Wave, Yorktown:

- FMVSS 302*

*This term and any corresponding data refer to the typical performance in the specific tests indicated and should not be construed to imply the behavior of this or any other material under actual fire conditions.

Features & Benefits of Protégé:

- MGX MorGuard Xtreme™ finish

MGX MorGuard Xtreme™ offers superior stain protection. Common staining agents such as BBQ Sauce, Mineral Oil Lubricant, Sun Screen SPF 30, Yellow Mustard, Lipstick, Ballpoint Pen, Exhaust Soot, and Cola are easily removed with the use of Formula 409®, Isopropyl Alcohol, and water.

Care and Cleaning Instructions

For Normal Cleaning: In general, most common stains can be cleaned using warm, soapy water and clear water rinses. Moderate scrubbing with a medium bristle brush will help to loosen soiling material from the depression of embossed surfaces.

For Stubborn Stains: Use Formula 409® commercially available mild detergent in accordance with manufacturers' instructions. Test cleaners in an inconspicuous area as cleaner manufacturers may change formulas without notice. Full strength rubbing alcohol or mineral spirits may be tried cautiously as a last resort on very stubborn stains, if the above suggestions do not work. Indiscriminate use of any solvent or solvent containing cleaner can severely damage or discolor vinyls.